

R Cbwd1 Antibody (C-term)
Affinity Purified Rabbit Polyclonal Antibody (Pab)
Catalog # AP20490b

Specification

R Cbwd1 Antibody (C-term) - Product Information

Application	WB,E
Primary Accession	Q99MB4
Reactivity	Rat
Host	Rabbit
Clonality	Polyclonal
Isotype	Rabbit IgG
Calculated MW	43931
Antigen Region	325-351

R Cbwd1 Antibody (C-term) - Additional Information

Gene ID 171057

Other Names

COBW domain-containing protein 1, Cobalamin synthase W domain-containing protein 1, Cbwd1

Target/Specificity

This Rat Cbwd1 antibody is generated from rabbits immunized with a KLH conjugated synthetic peptide between 325-351 amino acids from the C-terminal region of rat Cbwd1.

Dilution

WB~~1:1000

E~~Use at an assay dependent concentration.

Format

Purified polyclonal antibody supplied in PBS with 0.09% (W/V) sodium azide. This antibody is purified through a protein A column, followed by peptide affinity purification.

Storage

Maintain refrigerated at 2-8°C for up to 2 weeks. For long term storage store at -20°C in small aliquots to prevent freeze-thaw cycles.

Precautions

R Cbwd1 Antibody (C-term) is for research use only and not for use in diagnostic or therapeutic procedures.

R Cbwd1 Antibody (C-term) - Protein Information

Name Zng1

Synonyms Cbwd1

Function Zinc chaperone that directly transfers zinc cofactor to target metalloproteins, thereby activating them. Catalyzes zinc insertion into the active site of methionine aminopeptidase METAP1, which function to cleave the initiator methionine from polypeptides during or after protein translation. Mechanistically, the N-terminal psi-PxLVp motif binds to the C6H2-type zinc finger of inactive form of METAP1. After formation of the docked complex, zinc is transferred from the CXCC motif in the GTPase domain of ZNG1 to the zinc binding site in the peptidase domain of METAP1 in a process requiring GTP hydrolysis. GTP/GDP exchange is required for release of active METAP1.

Cellular Location

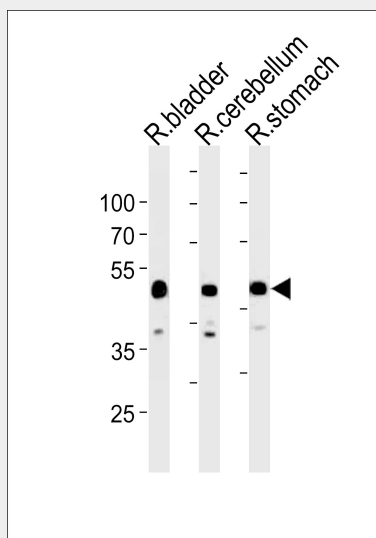
Nucleus {ECO:0000250|UniProtKB:Q8VEH6}.

R Cbwd1 Antibody (C-term) - Protocols

Provided below are standard protocols that you may find useful for product applications.

- [Western Blot](#)
- [Blocking Peptides](#)
- [Dot Blot](#)
- [Immunohistochemistry](#)
- [Immunofluorescence](#)
- [Immunoprecipitation](#)
- [Flow Cytometry](#)
- [Cell Culture](#)

R Cbwd1 Antibody (C-term) - Images



Rat Cbwd1 Antibody (C-term) (Cat. #AP20490b) western blot analysis in rat bladder, cerebellum and stomach tissue lysates (35ug/lane). This demonstrates the Rat Cbwd1 antibody detected the Rat Cbwd1 protein (arrow).

R Cbwd1 Antibody (C-term) - References

Shi J., et al. Submitted (FEB-2001) to the EMBL/GenBank/DDBJ databases.